

Properties of FINEX Fiber Cement Panels

- Below-grade installation
- Structural strength = 800 lbs/in²
- Finished panels
- Fire and heat-resistant
- Decay-resistant
- Rot-resistant
- Water-resistant
- Corrosion-resistant
- UV-resistant
- Freeze/thaw-resistant
- Impact-resistant
- Acid and chemicals-resistant
- **Lifetime Warranty !**





Projects that last a lifetime
www.gofinex.com

FIBER CEMENT PANELS

- 1/2 inch (12 mm) thick panels

Sizes: 4' x 8' and 4' x 10'

Horizontal Applications

- 1/4 inch (6 mm) thick panels

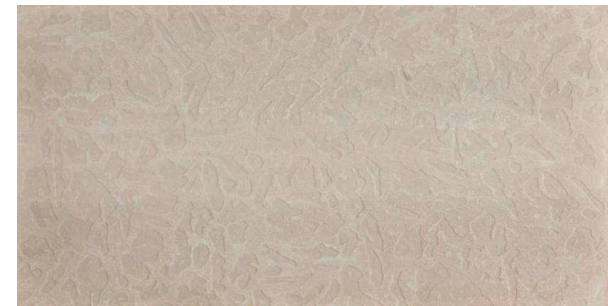
Sizes: 4' x 4' and 4' x 8'

Vertical Applications

SMOOTH

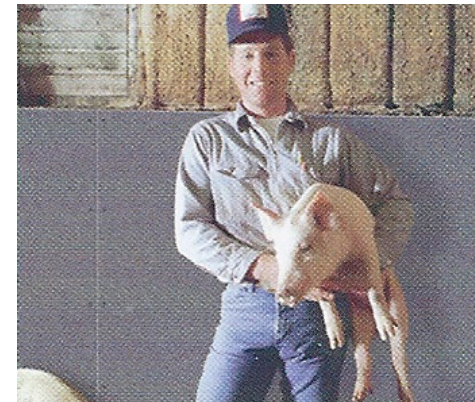


TEXTURED



Agricultural Applications

- Durable
- Resistance to moisture, mould and rodents
- Resistance to corrosion and impact
- Smooth panels = easier to maintain
- Doesn't require paint or finishing



Limitless Applications !

- Interior Walls
- Pig Pens
- Sheep Shelters
- Stables
- Tobacco Kilns
- Attics
- Garages
- Furnace Rooms
- Silos
- Dairy Barns
- Barn Siding
- Hog Grower-Finisher Units
- Feeders
- Chicken Coop Floors
- And Many More !

